

Aesthetic Challenge

TWO MAXILLARY CENTRALS RESTORED WITH
E.MAX PRESS LT BL3 AND E.MAX CERAM

SZABOLCS HANT DT.
CORE DENTAL CERAMICS
COREDENTALCERAMICS@IINET.NET.AU





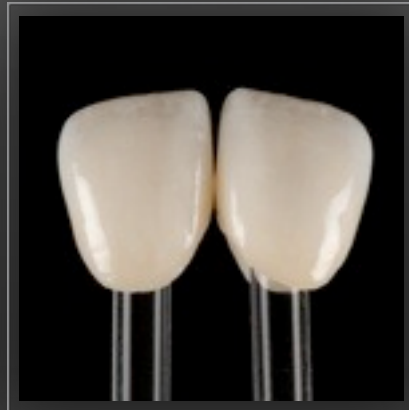
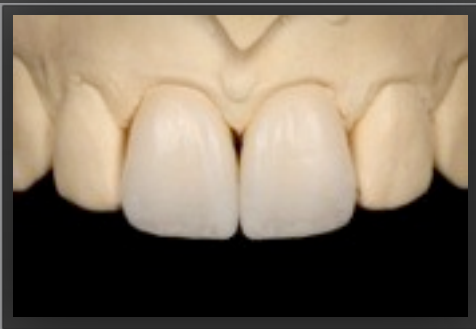
Fig 1.
Preoperative
central incisors with
discoloured direct
composite veneers



Fig 2.
Palatal view



Fig 3.
The shade was
between A1 and
BL4



CASE REPORT:

The young female patient with discoloured composite direct veneers presented in the lab for shade analysis. The aesthetic disharmony not only caused by discoloration, but also the shortness of the two incisors.

MATERIALS:

At the shade analysis I have found that the patient's laterals were between VITA A1 and Ivoclar Vivadent "Bleach" BL4. Because the prepared tooth abutments had no discoloration e.max Press LT BL3 ingot was selected for this case. Generally I choose one or two shade brighter ingot to ensure the appropriate value.

LAYERING:

To determine the right length and buccal dimension of the centrals I used the anatomical wax-up and I invested and pressed it. The crowns were designed similar to "cut-back" technique, nevertheless 0.2 mm reduction is required on the buccal for a sufficient room for an enamel layer. After shading of the frame and first dentin build-up was fired the internal effects were replicated with internal staining. The stains were fixed and a thin layer of OE1 was used to finalise the shape. To achieve a natural lustre we should use mechanical polishers. With the SHOFU Ceramisté and the Soft-Cut rubbers I pre-polished the crowns and to have the desired surface shine I used a pumice/aluminium-oxide mixture to polish the restorations.

